

TMQ C-PLOT

COMPUTER BASED PLOTTING

TMQ C-Plot is a sophisticated and reliable computer-based chart plotting program designed for both recreational and professional applications.



Flexible

Economical

Easy operation

Now available with Piscatus 3D

world class navigation at your command



C - PLOT



TMQ C-Plot provides an intuitive and easy to use computer-based chart plotting system, incorporating features developed within the demanding professional fishing industry. Further development has produced versions of C-Plot to provide a wide range of options to suit both professional and recreational requirements

Features: C-Plot is easily installed onto a standard PC or laptop, making it the ideal solution for the recreational or professional fisherman. The TMQ C-Plot provides an alternative to the many dedicated plotters on the market. Its ability to use marks from major plotting systems used in the fishing industry allows for cost savings and future upgrading without loss of data

Display: The screen displays all navigational data overlaid on a user-selected chart. With GPS input, vessel position, speed and heading are displayed. Using NMEA 0183 compatible equipment, depth temperature, heading and bottom hardness may be displayed and stored to enhance navigation data.

Charts: C-Plot has a number of flexible chart options to suit your individual needs. C-Plot can access and display electronic raster scanned charts including Australian Seafarer Hydrographic charts, British UKHO charts and New Zealand Linz Charts. C-Plot Pro can display C-Map vector charts.

Track: Indicates historical information on vessels past movement. Track points can be recorded by user defined distance or time intervals. C-Plot offers 16 user defined colours for vessel track, depth and temperature.

Routes: C-Plot can provide steering information to a compatible auto pilot for automatic route management to follow a previously set desired course.

Waypoints: Waypoints, marks and events can be added easily, by either a point and click or menu function. Since C-Plot is a computer-based system the amount of user data and navigation data stored is only limited by the computer hard disk space installed.

Range and Bearing: Electronic range and bearing, controlled by the cursor provides navigational information such as the bearing and distance between two points or your vessel and a fixed point.

Optional hardware: C-Plot is the only computer-based plotting system with its own dedicated keyboard. The C-Plot key panel provides simple plotter type control in the wheel house, or can be used as a fly bridge, or second station control.

3D Seabed Mapping: Piscatus 3D is a comprehensive three dimensional fishing tool that shows you exactly what is happening when you fish. View your boat, the seabed and the fish you catch...all in an animated 3D landscape.



Connectivity: C-Plot can be integrated via standard NMEA 0183 to Radar for ARPA target, sounder for temperature and depth and autopilot for way point steering.

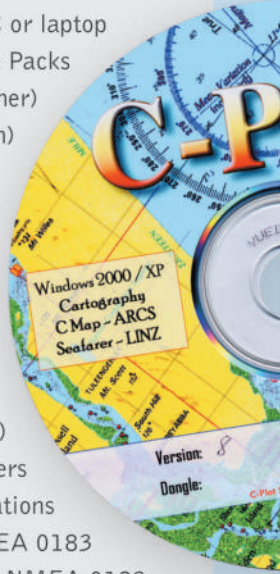
TMQ C-Plot is an aid to navigation and does not replace the requirement for official paper charts and for safe navigation.



TMQ International Pty Ltd
1/18 Alexandra Pl, Murarrie Qld 4172
PO Box 3348 Tingalpa DC Qld 4173 Australia
Tel: 61 (0)7 3890 7788 Fax: 61 (0)7 3890 7799
Email: tmq@tmq.com.au Web: www.tmq.com.au
Branch offices in Fremantle and Auckland (NZ)

Requirements

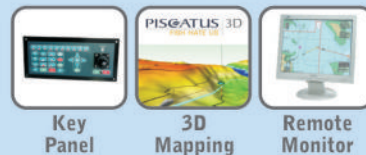
- IBM Compatible PC or laptop
- Windows XP+ Service Packs
- Intel Pentium III (or higher)
- 256Mb RAM (Minimum)
- 40Gb Hard Drive
- CD ROM Drive
- 3.5" (1.44Mb) Disc Drive
- SVGA Monitor (800x600 min. res)
- Graphics Accelerator Video Card
- 2xUSB Ports (minimum)
- 1 x Serial Comport (2x preferred)
- PS/2 Mouse (or pointing device)
- Sound Card and Speakers
- I/O Specifications
- Input Data NMEA 0183
- Output Data NMEA 0183



BASIC C-PLOT SYSTEM



C-PLOT OPTIONS



C-PLOT CONNECTIVITY OPTIONS



Images are for illustration purposes only.

Your local TMQ distributor is: