



C-Plot Hand Remote

OPERATION AND INSTALLATION MANUAL

www.tmq.com.au

This page is intentionally blank

Index

WARNING.....	4
INTRODUCTION.....	6
<i>Essential Components:</i>	6
SETUP METHOD.....	6
C-PLOT HAND REMOTE LAYOUT	7
BUTTON FUNCTIONS	8
C-PLOT HAND REMOTE, JRC GPS AND AUTOPILOT CONNECTION	10
C-PLOT HAND REMOTE, TMQ GPS AND AUTOPILOT CONNECTION	11
TMQ C-COM COMMUNICATIONS SERVER SETUP	12
SCHEMATIC	13
PCB OVERLAY.....	14

WARNING

THIS DEVICE IS ONLY AN AID TO NAVIGATION. ITS ACCURACY CAN BE AFFECTED BY MANY FACTORS SUCH AS EQUIPMENT FAILURE OR DEFECTS, ENVIRONMENTAL CONDITIONS AND INCORRECT USE.

IT IS THE RESPONSIBILITY OF THE USER TO USE COMMON SENSE AND NAVIGATION JUDGEMENT. THIS DEVICE SHOULD NOT BE RELIED ON AS A SUBSTITUTE FOR SUCH COMMON SENSE AND JUDGEMENT.

CHARTS DISPLAYED USING C-PLOT SF/PRO ARE FOR REFERENCE ONLY AND ARE NOT INTENDED TO REPLACE PAPER CHARTS. OFFICIAL PAPER CHARTS ARE THE MOST RELIABLE SOURCE OF NAVIGATIONAL INFORMATION.

COPYRIGHT

Certain Hydrographic information in TMQ Charts is © Commonwealth of Australia; and is used under license with the permission of

*The Australian Hydrographic Office
All Rights Reserved.*

Apart from the users permitted to the licensee under the licence agreement, the information may not be copied, reproduced, translated, in whole or part, without the prior written consent of the Australian Hydrographic Office.

WARNING: *The Australian Hydrographic Office does not check the information in TMQ Charts and the Commonwealth accepts no liability for the accuracy of copying or for any modifications that may have been made to the information, which it has supplied.*

Furthermore, the Commonwealth does not warrant that this product meets any regulations as an appropriate product for navigation or that it contains the latest Hydrographic information available.

TMQ CHARTS ARE NOT SUITABLE FOR NAVIGATION

Manager, Business Co-ordination
The Australian Hydrographic Office
Locked Bag 8801
South Coast Mail Centre
NSW 2521

Windows 98/ME/2000/XP/NT™ are registered trademarks of the Microsoft Corporation. Where the word 'Windows' appears in this manual it is intended as "Windows 98", "Windows ME", "Windows 2000", "Windows XP" or "Windows NT™".

Introduction

Congratulations on your wise choice and purchase of the TMQ C-Plot Hand Remote. We are sure that you will enjoy the benefits that it offers.

<h3><u>C-Plot Hand Remote System</u></h3>
--

The TMQ C-Plot hand remote has been designed to provide an additional means of operating the TMQ C-Plot chart plotting software. A 9 pin 'D-type' Com port is required on the PC running C-Plot for the C-Plot hand remote to be connected. GPS data can be connected to the same Com port as the C-Plot hand remote if required. There are no other connections required to the C-Plot hand remote.

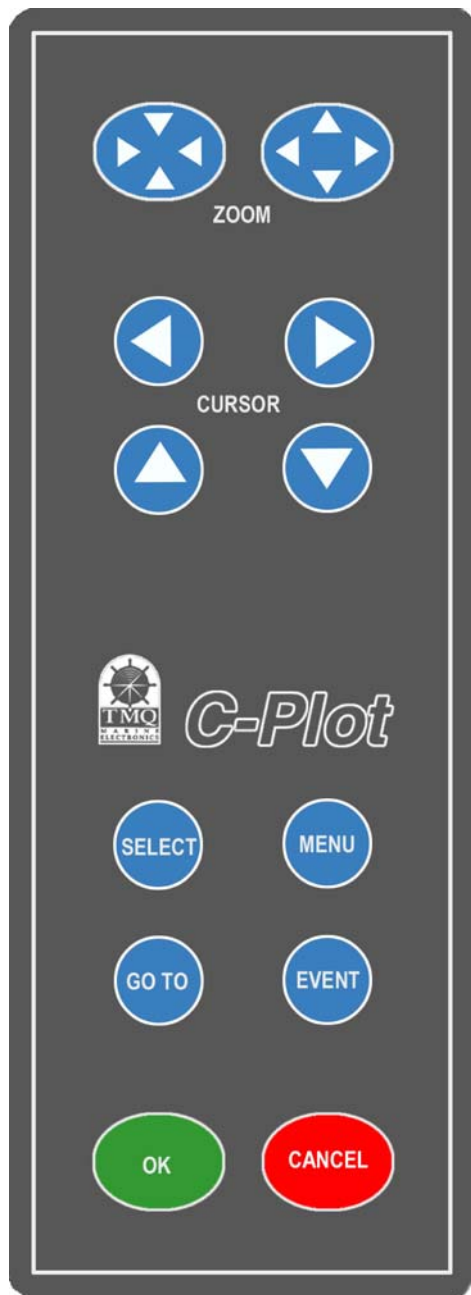
Essential Components:

- TMQ C-Plot chart plotting software.
- TMQ C-Plot hand remote.

Setup Method

1. Connect the C-Plot hand remote to the available Com port of the PC.
2. Run C-Plot chart plotting application.
3. Open C-Com and configure the C-Plot hand remote. (See the TMQ C-Com Communications Server Setup section later in this book)
4. Setup is now complete.

C-Plot Hand Remote Layout



Button and Function layout has been selected to optimise the ease and enable intuitive operation.

Buttons are located in groups:

- Zoom functions at the top
- Cursor positioning functions just below zoom for easy thumb location
- Function buttons grouped together
- OK and Cancel buttons located at the bottom of the hand remote to enable easy location

Button functions



Zoom Out

Decreases the size of the chart, more of the chart is visible on the screen



Zoom In

Increases the size of the chart, less of the chart is visible on the screen



Pan Left

Moves the chart 1/3 of the screen in the direction shown



Pan Right

Moves the chart 1/3 of the screen in the direction shown.



Scroll Up

Moves the chart 1/3 of the screen in the direction shown.



Scroll Down

Moves the chart 1/3 of the screen in the direction shown.



Selects the current function the pointer is over.



Displays the Main Menu.



Creates a quick route between the vessel's current position and the cursor.



Places an Event mark at the current location.

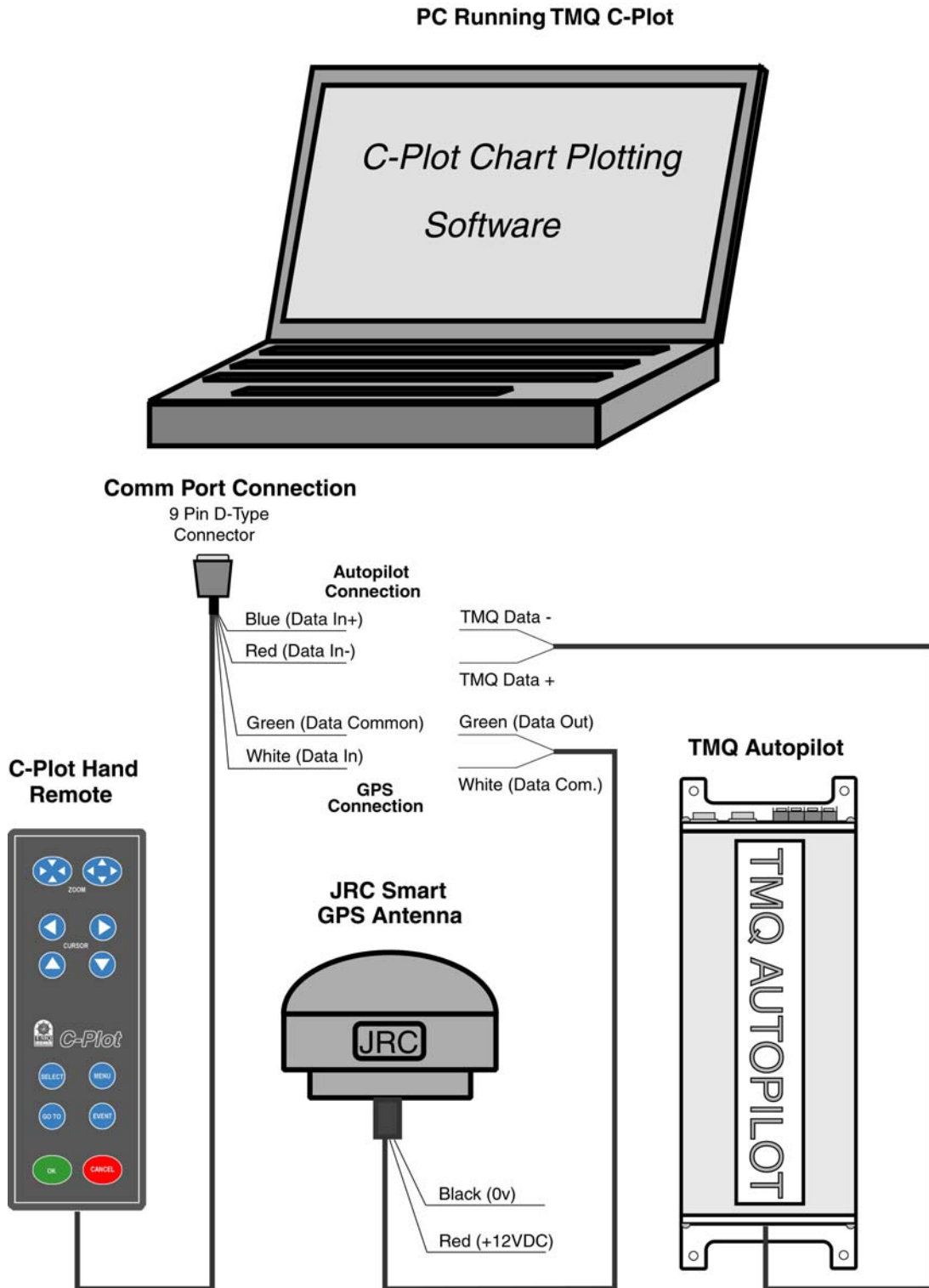


This key is used to verify operations.

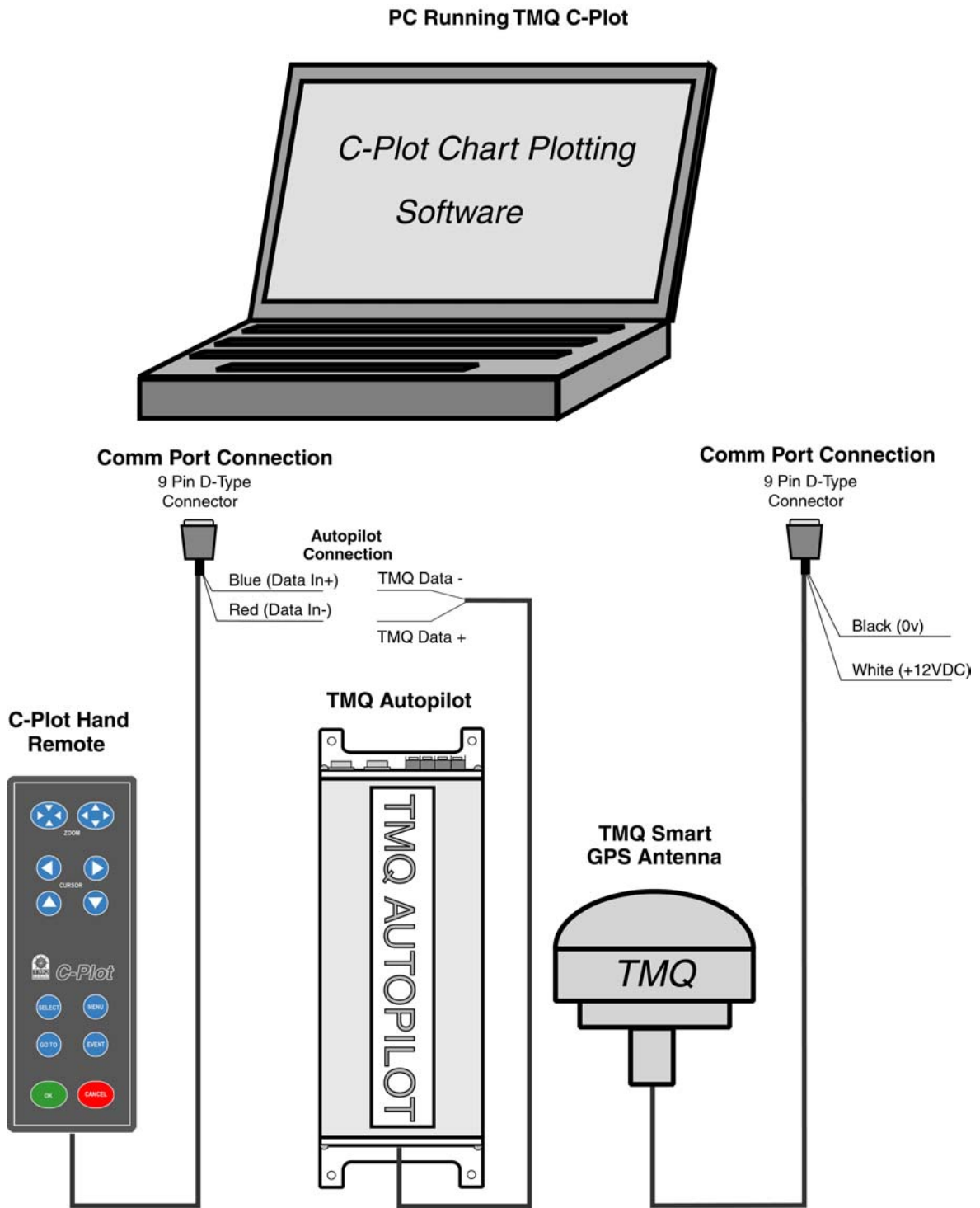


Used to end an operation or function without executing the operation.

C-Plot hand remote, JRC GPS and Autopilot connection



C-Plot hand remote, TMQ GPS and Autopilot connection



TMQ C-Com Communications Server Setup

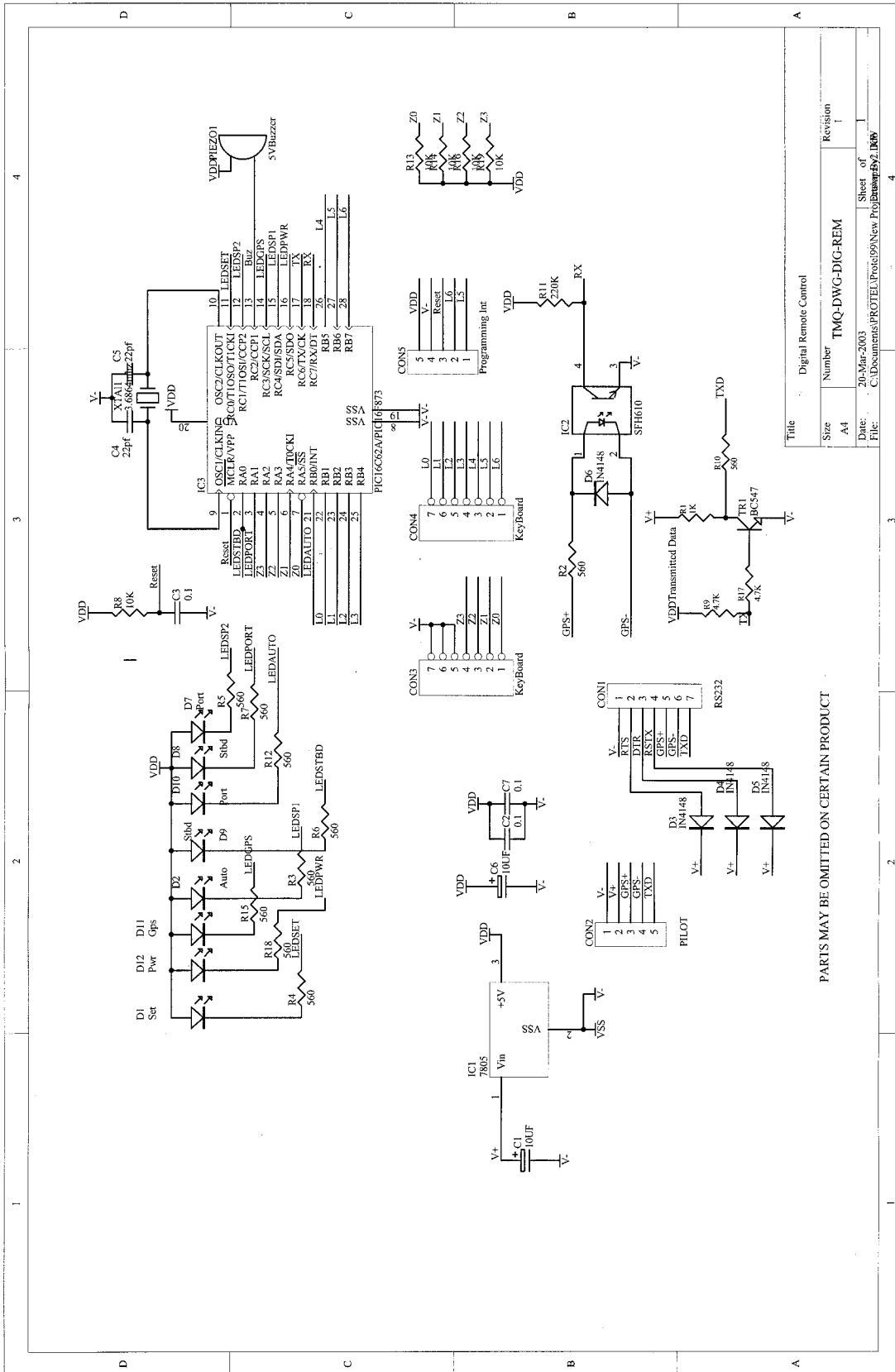
C-Com will require setting up. To do this start C-Plot then double left mouse click on the C-Com Icon  in the system tray (bottom right side of the screen).

- Select the 'Input Configuration' tab.
- Select 'C-Panel' and set the source to be the Comm. Port that the C-Plot hand remote is connected to from the 'Source' drop down list.
- Set the NMEA Data type to PNL from the 'NMEA Type' drop down list.
- The Check Sentence Structure (CSS) and Verify Check Sum (VCS) boxes should be left unticked.
- Click the 'Accept' button, double check that the settings are as required for the C-Panel.
- Select the 'Serial Setup' tab, Activate the Comm. Port that the C-Plot hand remote is connected to by placing a 'tick' in the box next to Active.

Port configuration should be:- 4800,N,8,1,N.

- C-Com is now setup. Data can be seen by selecting the 'Serial I/O' tab and the appropriate Comm. Port. C-Plot hand remote data can be seen in the 'Input Data Panel'. The data is in ASCII format and appears as characters, letters and symbols.
- C-Com is required to run in the background and can be hidden by clicking on the 'Hide' button.

C-Com setup is now complete, refer to your C-Plot Users Manual if more information is required.



PARTS MAY BE OMITTED ON CERTAIN PRODUCT

