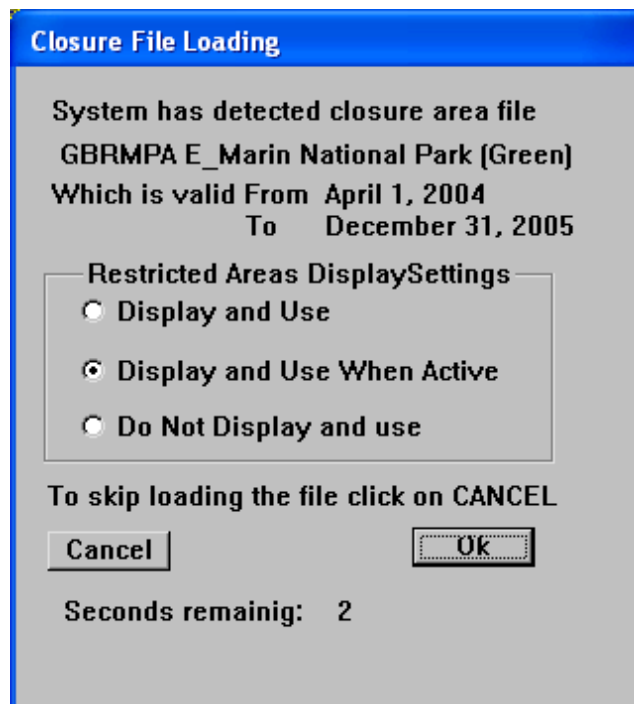




## C-Plot Version 8 GBRMPA Zones Cancelling Zones at Start-up

Every time C-Plot Version 8 is started a message box is displayed for each Active Zone as selected in the 'TMQ Closure Zone Dataset Manager' as shown in the example below,



Each Active Zone is individually loaded into C-Plot at start-up, a 10 second time delay is provided for each Zone to enable the user time to select 'OK' or 'Cancel'.

This provides the opportunity to cancel any Zone not required, click the Cancel button to cancel a particular zone from being loaded. To load the Active Zone the 'OK' button does not have to be clicked, as this is the default option after the 10 second time delay has passed.

Generally it is best to simply let all the Active Zones automatically load as C-Plot starts.