


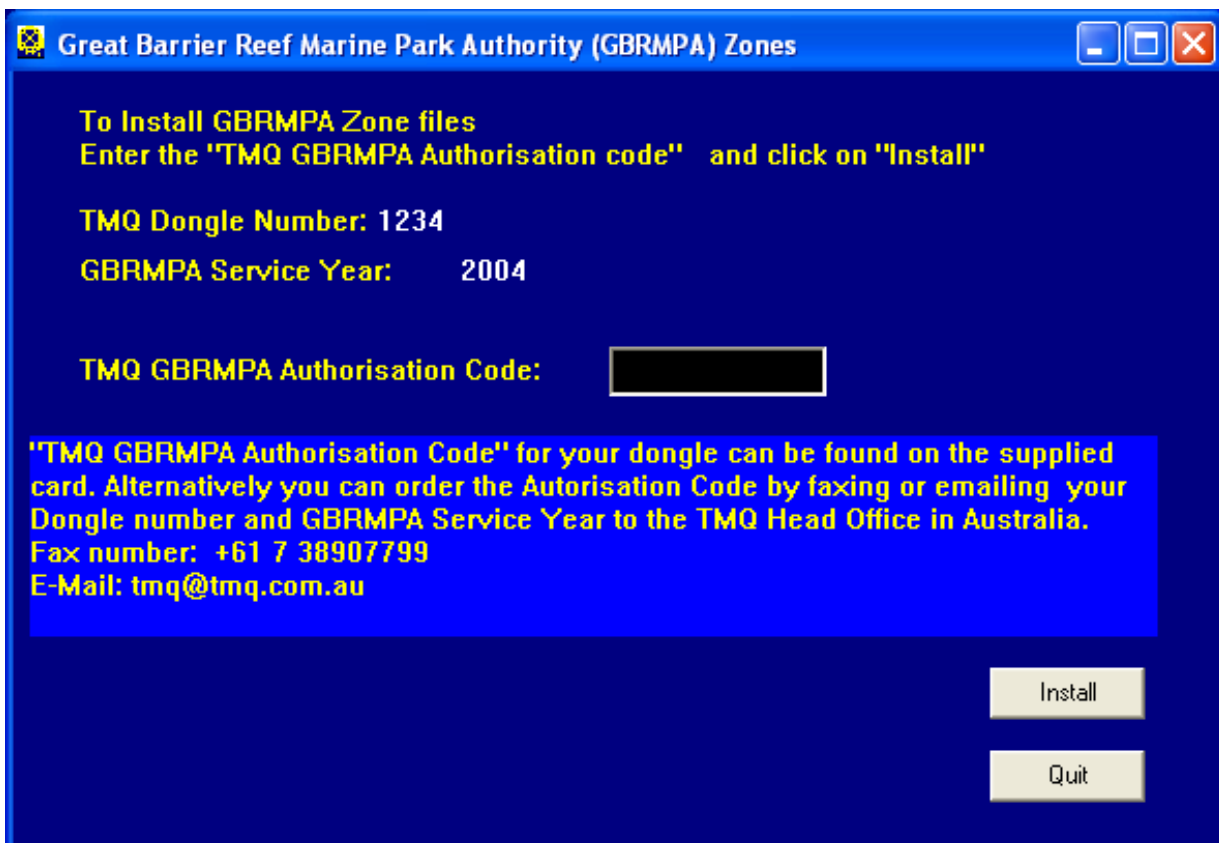



TMQ C-Plot Version 8

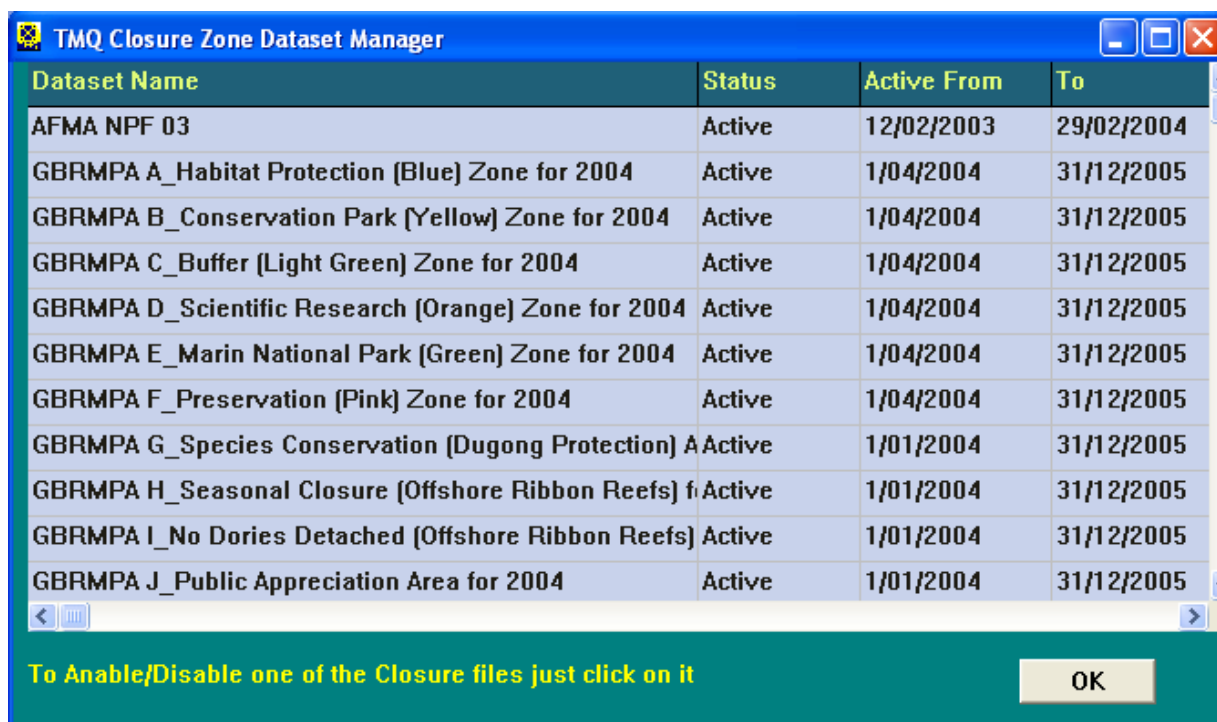
Installing GBRMPA Database

Procedure for installation of GBRMPA Zones.

1. Install C-Plot Version 8.
2. Click the  button to install the GBRMPA data files.
3. Enter the 'TMQ GBRMPA Authorisation Code'



4. Click the  button.
5. Confirmation of successful installation will be displayed.
6. After installation the following window will be displayed



7. Select which GBRMPA Zones are required to be displayed, simply click on the required zone to Enable or Disable it. Each time it is clicked on the current state is toggled.
8. When complete click OK.
9. Installation of GBRMPA Zones is now complete.
10. Zones can be Enabled or Disabled from within C-Plot at any time, see, '**Setting up or reconfiguring GBRMPA Zones from within C-Plot Version 8**'

IMPORTANT

Valid GPS Data is required for the correct operation of GBRMPA Zones.

The correct Position, Date and Time information is required to enable correct operation and display of the GBRMPA Zones ensure this data is correct and present.