



you can relax, it's a
WhisperGen

Installation Kit Overview

Model PPS16-12MD and Model PPS16-24MD

NOTE : Please refer to the *WhisperGen Installation Manual* for complete instruction on the installation of the WhisperGen and associated systems

Fuel System

Supplied is the hose and fittings required for connection from the filter/water separator to the WhisperGen.

The sequence of supplied fittings is as follows:-

- Filter/Separator
- 1/4"NPT x 1/8" Hose Tail
- 3.2mm I.D. flexible Fuel Hose
- Fuel Hose Clips for all Hose Tail connections
- Fuel Pump
- 3.2mm I.D. flexible Fuel Hose
- 1/8"BSP x 1/8 Hose Tail
- WhisperGen

Special note should be made not to exceed the maximum running lengths : -

- | | |
|-------------------------------------|------------------------------|
| ▪ Tank to filter | 5m if using a 10mm I.D. line |
| ▪ Filter to pump | 300mm |
| ▪ Pump to WhisperGen | 6m |
| ▪ Max vertical lift above fuel pump | 1.25m |

Primary Cooling System

Coolant Clean distilled water and high quality marine/automotive grade corrosion inhibitor, suitable for use with aluminium and any other metals that may be encountered in the system (i.e. steel, copper). If freezing conditions are expected, a glycol based marine grade anti-freeze is to be used. All additives must be pre-mixed according to the manufacturers specification.

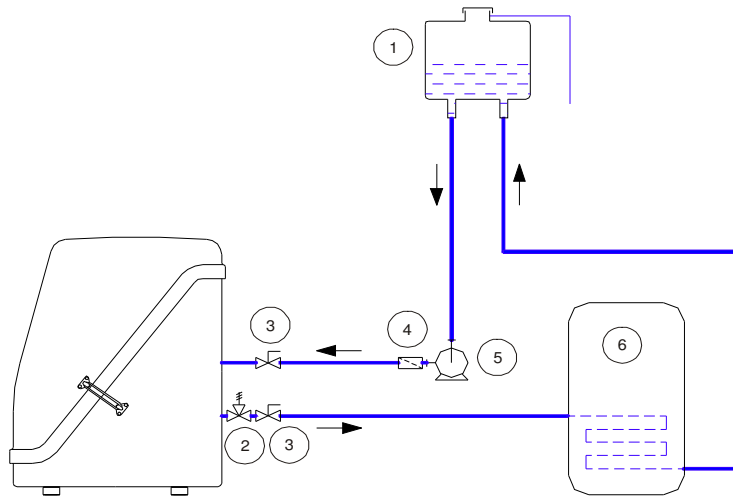
CAUTION: Do not connect the boat's main engine cooling system to the same circuit as the WhisperGen, as cast iron contaminants may damage the WhisperGen.

CAUTION: If the coolant system is used to heat the vessel potable water system, a compatible non-toxic corrosion inhibitor (and anti-freeze if required) must be used.

Option1: Potable water heating only

Key:

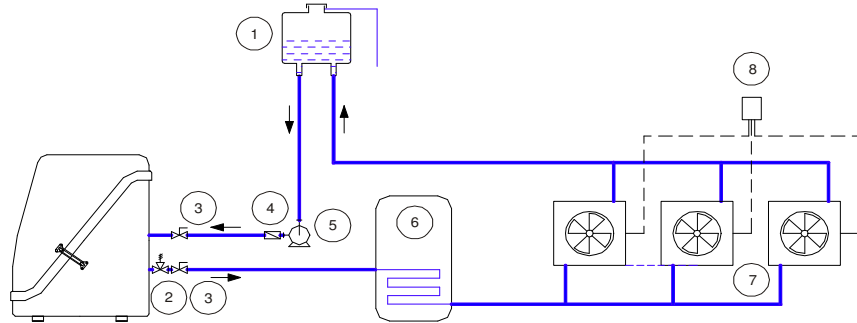
1. Header tank
2. Pressure relief valve (100 kPa)
3. Stopcock
4. Filter (min. 100 micron)
5. Coolant pump
6. Water heater - Calorifier



Option 2: Potable water heating and up to 5.5kW (19,000btu/h) space heating

Key:

- 1. Header tank
- 2. Pressure relief valve (100 kPa)
- 3. Stopcock
- 4. Filter (min. 100 micron)
- 5. Coolant pump
- 6. Water heater - Calorifier
- 7. Radiators, air/water heater
- 8. Room thermostat



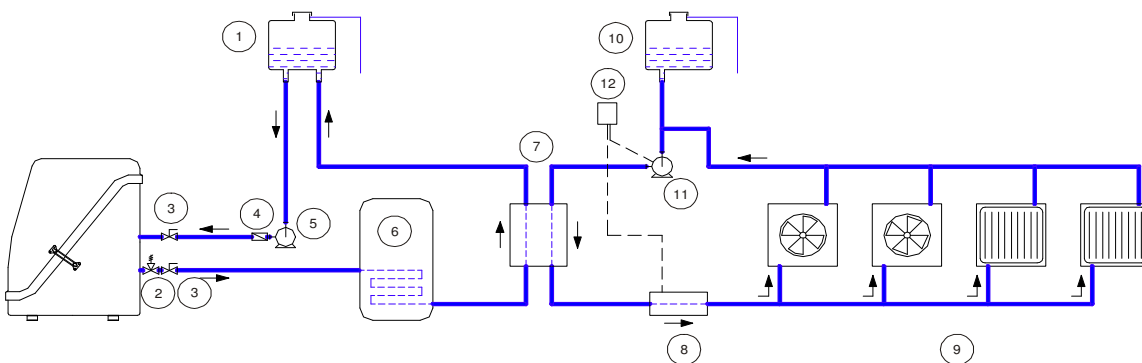
Option 3: Over 5.5 kW (19,000btu/h) heating requirement

The **Space heating kit** includes item **7 - Heat exchanger** and fittings to plumb to WhisperGen circuit

Items in the radiator circuit are not provided as part of this kit

Key:

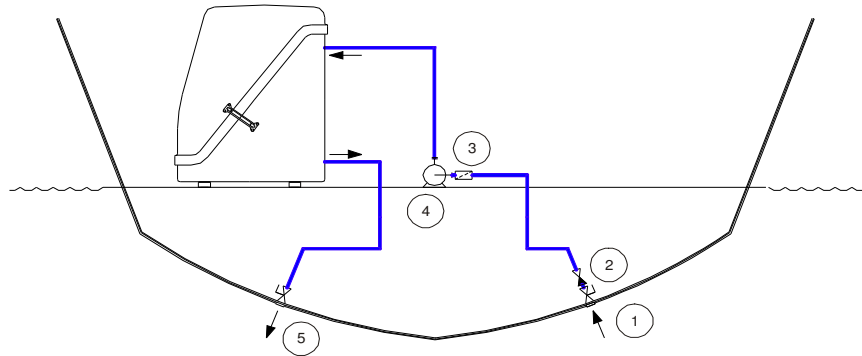
- 1. Header tank
- 2. Pressure relief valve (100 kPa)
- 3. Stopcock
- 4. Filter (min. 100 micron)
- 5. Coolant pump
- 6. Water heater - Calorifier
- 7. Heat exchanger
- 8. Diesel water heater
- 9. Radiators, air/water heater
- 10. Expansion or header tank
- 11. Pump (if not fitted to heater)
- 12. Thermostat



Secondary Cooling System

Key:

- 1. Inlet seacock
- 2. One way valve (if required)
- 3. Strainer / filter
- 4. Secondary cooling pump (self-priming)
- 5. Outlet seacock

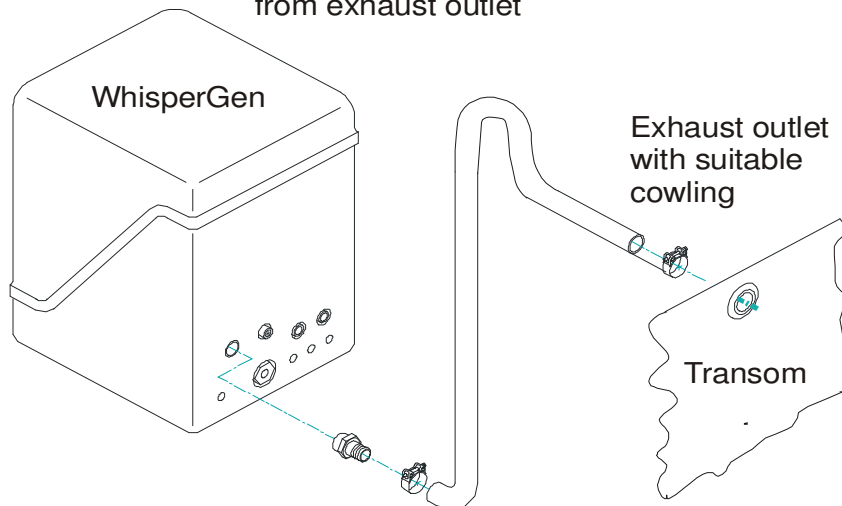


WARNING ! *The Secondary Cooling Circuit is plumbed to thru-hull fittings below the water line. A vessel flooding hazard exists if the plumbing integrity is compromised. Ensure all plumbing is securely mounted in positions **not** vulnerable to abrasion or being damaged or broken.*

Exhaust and Condensate

Piping and components must be supported to minimise the risk of failure from vibration , shock, expansion and contraction.

Bend in pipe to prevent backwash from exhaust outlet



Electrical

Ensure all supplied and non-supplied voltage sensitive components are voltage compatible i.e. **24V pumps - 24V WhisperGen**

2 core cable is supplied for use with Primary coolant, Secondary coolant and Fuel Pumps.

5 core cable is supplied for battery sensing function, i.e. battery current, voltage and temperature sensing

